

Looking for Space Heating? Make Up Air?

JH Series

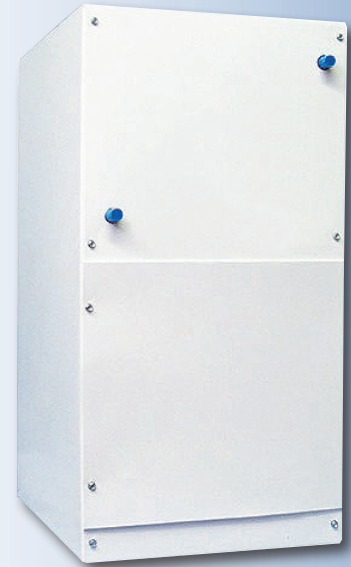
Fresh Air Make Up & Space Heating

Features & Benefits

In many parts of the world, building code demands that mechanical ventilation be used in every new structure that is built. These requirements protect your health and the structural integrity of your dwelling unit.

Using a variable speed fan control and non-electric zone valve, the JH Series Low Velocity Fan Coil delivers the proper amount of tempered fresh air to meet building code in radiant heated homes.

Due to the importance of Indoor Air Quality for health reasons, especially in arctic climates, the JH series fan coil has been used extensively to meet this demand.



Features

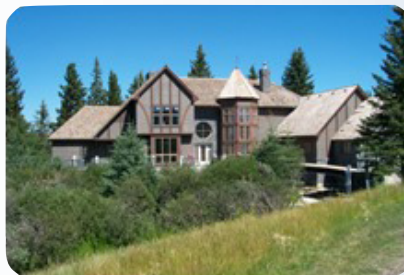
Designed for specialty applications to provide smaller areas with space heating and fresh air make-up; Can be used as a stand alone central exhaust ventilator system.

Ideal for areas such as:

- Sun Rooms
- Basements
- Garages
- Foyers
- Small Workspaces
- Any space that might require some additional heating or fresh air

Additional Features

Lined with an acoustic insulation
Variable speed blower
Two position return air
Can be installed horizontally or vertically
Filter and filter rack included



Residential



Commercial

Find a Distributor in your area:

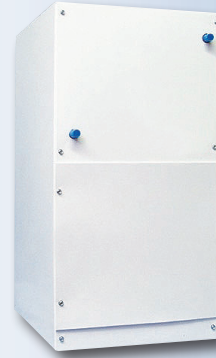
www.hi-velocity.com

JH Series

Fresh Air Make Up & Space Heating

Specifications

Includes
 Hot Water Coil
 JH-15/30 Coil
 Filter Rack w/ Filter
 JH-15/30 Filter



Fan Coil Specifications		JH-15	JH-30
CFM @ 0.12" E.S.P. (L/s @ 30 Pa)		200 (94 L/s)	380 (179 L/s)
Horse Power		1/25	1/12
Motor RPM		1550	1550
AMPS @ 115/1/60		1.5	2.4
Slo-Blo Fuse (AMPS)		2	2
Hydronic Connections	Supply	3/8" (9.5mm)	3/8" (9.5mm)
	Return	3/8" (9.5mm)	3/8" (9.5mm)
Supply Air Size		9" x 10" (228mm x 254mm)	9" x 10" (228mm x 254mm)
Return Air Size Needed		10" x 10" (254mm x 254mm)	10" x 10" (254mm x 254mm)
Shipping Weight (no coil)		25 lbs (11.3 Kg)	30 lbs (13.6 Kg)
Fan Coil Size	Length	22" (559mm)	22" (559mm)
	Width	14" (356mm)	14" (356mm)
	Height	12" (304mm)	12" (304mm)

Northern Pak (NP):

- Non-Electric Valve Body
- Air Sensor for Valve Body
- Rheostat
- Low Ambient Cut-Out
- Hanging Strap Kit

Full Northern Pak (FNP):

- Fresh Air Damper Section c/w Motor
- Non-Electric Valve Body
- Air Sensor for Valve Body
- Rheostat
- Low Ambient Cut-Out
- Hanging Strap Kit

Model

JH-15

JH-15 Hot Water Heating	EAT 60°F (16°C)	EAT 30°F (-1°C)	EAT 0°F (-18°C)	EAT -30°F (-34°C)
Max. BTUH @ 200°F E.W.T. (kW @ 93°C)	14,500 (4.2 kW)	17,500 (5.1 kW)	20,600 (6.0 kW)	23,000 (6.7 kW)
Max. BTUH @ 190°F E.W.T. (kW @ 88°C)	13,500 (3.9 kW)	16,500 (4.8 kW)	19,600 (5.7 kW)	22,000 (6.4 kW)
Max. BTUH @ 180°F E.W.T. (kW @ 82°C)	12,400 (3.6 kW)	15,400 (4.5 kW)	18,500 (5.4 kW)	20,900 (6.1 kW)
Max. BTUH @ 170°F E.W.T. (kW @ 77°C)	11,300 (3.3 kW)	14,400 (4.2 kW)	17,500 (5.1 kW)	19,900 (5.8 kW)
Max. BTUH @ 160°F E.W.T. (kW @ 71°C)	10,300 (3.0 kW)	13,300 (3.9 kW)	16,400 (4.8 kW)	18,900 (5.5 kW)
Max. BTUH @ 150°F E.W.T. (kW @ 66°C)	9,200 (2.7 kW)	12,300 (3.6 kW)	15,400 (4.5 kW)	17,900 (5.2 kW)
Max. BTUH @ 140°F E.W.T. (kW @ 60°C)	8,200 (2.4 kW)	11,300 (3.3 kW)	14,300 (4.2 kW)	16,900 (4.9 kW)
Max. BTUH @ 130°F E.W.T. (kW @ 54°C)	7,200 (2.1 kW)	10,200 (3.0 kW)	13,300 (3.9 kW)	15,800 (4.6 kW)
GPM Flow Ratings (L/s Flow Ratings)	3 (0.19 L/s)	3 (0.19 L/s)	3 (0.19 L/s)	3 (0.19 L/s)

Model

JH-30

JH-30 Hot Water Heating	EAT 60°F (16°C)	EAT 30°F (-1°C)	EAT 0°F (-18°C)	EAT -30°F (-34°C)
Max. BTUH @ 200°F E.W.T. (kW @ 93°C)	31,400 (9.2 kW)	38,200 (11.2 kW)	44,900 (13.2 kW)	51,600 (15.1 kW)
Max. BTUH @ 190°F E.W.T. (kW @ 88°C)	29,200 (8.6 kW)	35,900 (10.5 kW)	42,600 (12.5 kW)	49,300 (14.4 kW)
Max. BTUH @ 180°F E.W.T. (kW @ 82°C)	26,900 (7.9 kW)	33,600 (9.8 kW)	40,300 (11.8 kW)	47,000 (13.7 kW)
Max. BTUH @ 170°F E.W.T. (kW @ 77°C)	24,600 (7.2 kW)	31,300 (9.2 kW)	38,000 (11.1 kW)	44,700 (13.1 kW)
Max. BTUH @ 160°F E.W.T. (kW @ 71°C)	22,300 (6.5 kW)	29,000 (8.5 kW)	35,700 (10.5 kW)	42,400 (12.4 kW)
Max. BTUH @ 150°F E.W.T. (kW @ 66°C)	21,100 (6.1 kW)	26,800 (7.9 kW)	33,400 (9.8 kW)	40,100 (11.7 kW)
Max. BTUH @ 140°F E.W.T. (kW @ 60°C)	17,800 (5.2 kW)	24,500 (7.2 kW)	31,200 (9.1 kW)	37,900 (11.1 kW)
Max. BTUH @ 130°F E.W.T. (kW @ 54°C)	15,600 (4.6 kW)	22,200 (6.5 kW)	28,900 (8.5 kW)	35,500 (10.4 kW)
GPM Flow Ratings (L/s Flow Ratings)	3 (0.19 L/s)	3 (0.19 L/s)	3 (0.19 L/s)	3 (0.19 L/s)

Accessories

- Variable Speed Controls
- Return and Supply Air Collars
- Low Temperature Cut Off
- Fresh-Air Damper Box
- Isolation Hanging Straps

CFM - Cubic Feet per Minute
 EAT - Entering Air Temperature
 EWT - Entering Water Temperature
 ESP - External Static Pressure
 RPM - Revolutions per Minute
 GMP - US Gallons per Minute



Small Duct High Velocity Heating,
 Cooling and IAQ Systems

Find a Distributor in your area:

www.hi-velocity.com